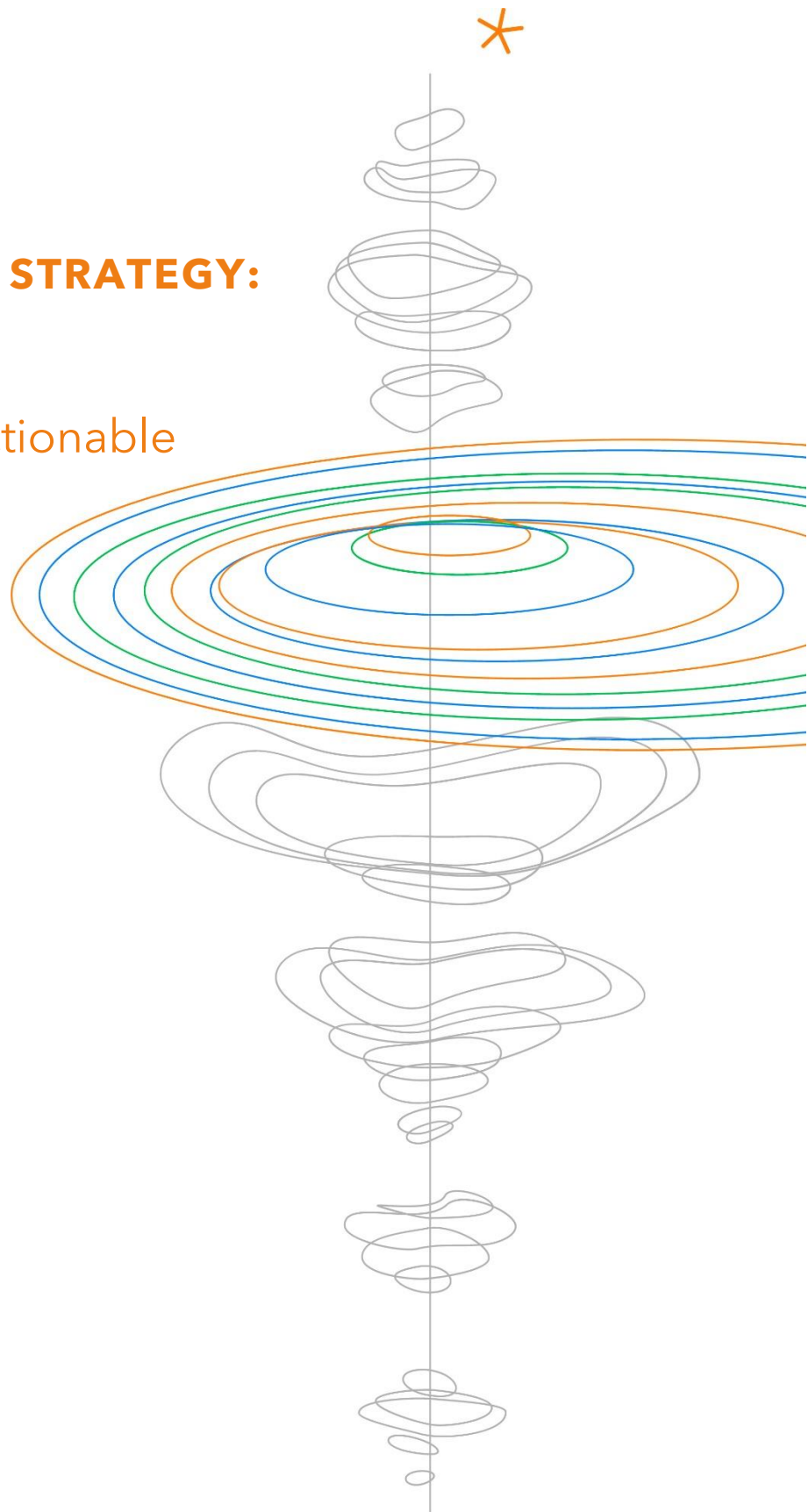


TOBAM LBRTY® EM STRATEGY: EMPIRICAL FACTS

Original research, actionable
insight



July 2024

For Professional Investors

This material is provided for information purposes only and does not constitute a recommendation, solicitation, offer, advice or invitation to enter in any transaction and should in no case be interpreted as such.

TOBAM recently implemented LBRTY®, a strategy aiming to reduce direct and indirect exposure to the autocracy risk factor, understood as the risk associated with investing in autocratic regimes.

TOBAM's investment thesis with LBRTY® is that a portfolio exposed to countries where arbitrariness and economic irrationality reign, does not fully benefit from the risk it is taking in these countries. Said differently, risk borne in autocracies yields less performance than elsewhere.

This note discusses TOBAM LBRTY® Emerging Markets strategy, through 3 features:

1. LBRTY® EM, contrary to its benchmark, tilts away from stocks linked to authoritarian regimes;
2. LBRTY® EM differs from a traditional factor portfolio: beta to factors exhibits variability over time, in both (sign) and size (magnitude);
3. most of LBRTY's excess return comes from limiting indirect exposure to autocracies.

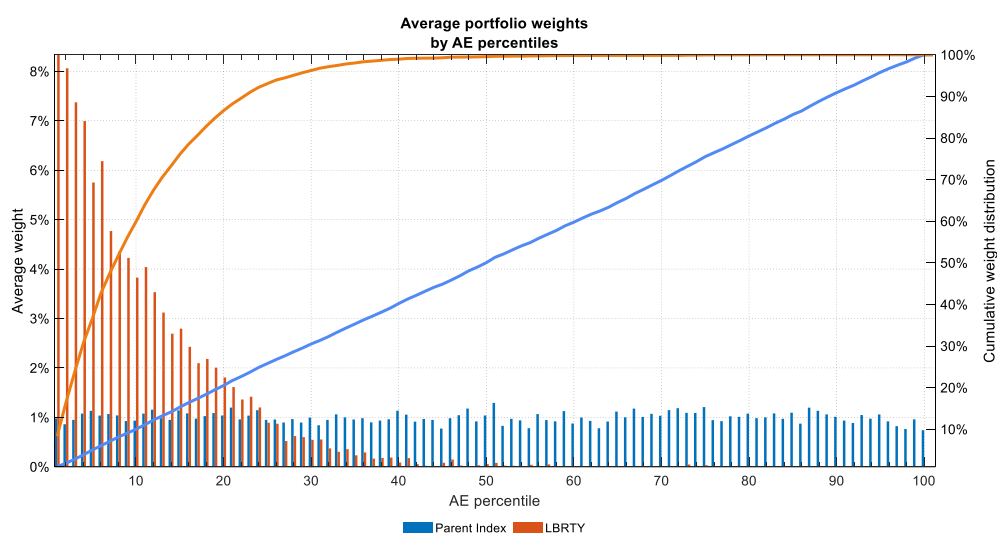
I. LBRTY'S ALLOCATION TILTS AWAY FROM STOCKS LINKED TO AUTHORITARIAN REGIMES

TOBAM's proprietary Authoritarian Exposure (AE) methodology measures the exposure of each stock to autocratic country risk. All these countries belong to emerging markets, the market capital-weighted benchmark comprises indeed many stocks incorporated in authoritarian countries, in terms of number and collective weight. The remaining stocks are still subject to this risk, even though they are incorporated in democratic countries.

The graphic below shows that the emerging market benchmark (Bloomberg EM), in blue, is indifferent in its allocation to AE: sorting the stocks by AE, we see that **the weights on each level are uniform, with no bias towards low or high exposures.**

By contrast, LBRTY® EM, in orange, seeks to minimize its exposure, while staying close to the benchmark. Not only does it exclude stocks incorporated in authoritarian countries, but it also penalises remaining stocks when they have strong ties to those countries, as measured by beta. The resulting allocation shows that the largest portfolio weights are on the low AE percentiles, and almost all stocks display below average AE.

Figure 1: LBRTY® EM Portfolio allocation vs. authoritarian exposure, by percentile



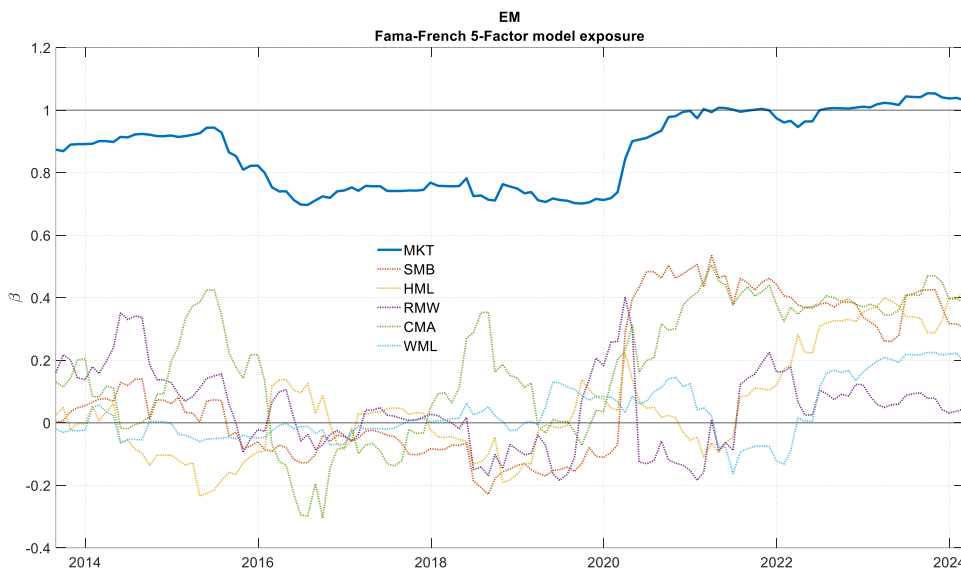
Source: Bloomberg TOBAM. The period covered is from 2008 to 2023. Each percentile point comprises about 10 stocks.

II. LBRTY® EM DIFFERS FROM A TRADITIONAL FACTOR PORTFOLIO

The regression of portfolio return over the monthly Fama-French factors (from K. French’s website) reveals considerable variability in exposure to traditional risk factors between 2014 and 2024, except for market beta (0.9 in average). The CMA (Conservative Minus Aggressive) factor, one of Fama-French’s quality factors, is significantly positive in an ex-post regression, though its amplitude varies with time.

LBRTY® EM has thus less systematic risk than its benchmark¹, avoiding the unrewarded risk associated with Authoritarian Exposure, a choice that translates as a slight quality bias in traditional analysis.

Figure 2: LBRTY® EM Fama French Factor analysis



Source: Kenneth website and TOBAM. Five-year regression analysis based on monthly data. The period covered is from September 2008 to February 2024. The Betas are computed on Factors are on Emerging market universe. Size (SMB), Value (HML), Quality (RMW & CMA), Momentum (WML).

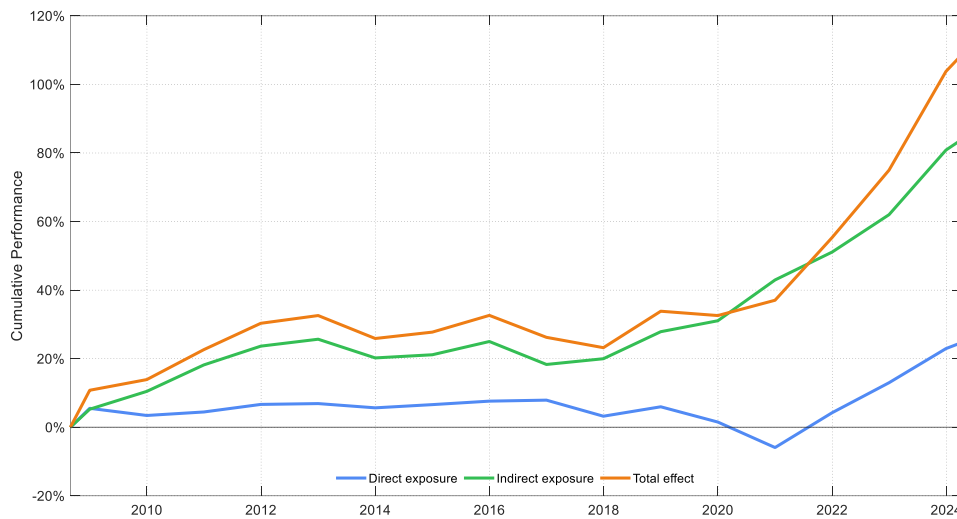
III. MOST OF LBRTY’S EXCESS RETURN COMES FROM LIMITING INDIRECT EXPOSURE TO AUTOCRACIES

The difference in composition between LBRTY® EM and its benchmark is twofold: the portfolio excludes all authoritarian stocks, and the portfolio re-weights the remaining democratic stocks to account for their exposure to autocratic economies. The former can be classified as direct exposure and the latter as indirect exposure.

This corresponds to a performance attribution between the direct exposure (allocation effect) and indirect exposure (selection effect). The latter is both consistent and dominant. Indeed, as depicted in the figure below, the indirect exposure (in green), explains the vast majority of the LBRTY® EM relative performance (in orange). Said differently, solely excluding countries from a portfolio has a marginal effect on performance, whereas the choice of weights within the remaining countries accounts for almost all the excess return.

¹ Benchmark: BBG Emerging Markets L/M TR

Figure 3: Cumulative performance attribution - LBRTY® EM vs Parent index
 Aug 2008 to Mar 2024



Source: TOBAM, Bloomberg. The graph represents the cumulative the LBRTY® EM relative performance in orange and its decomposition between the direct exposure (in blue) and indirect exposure (in green).

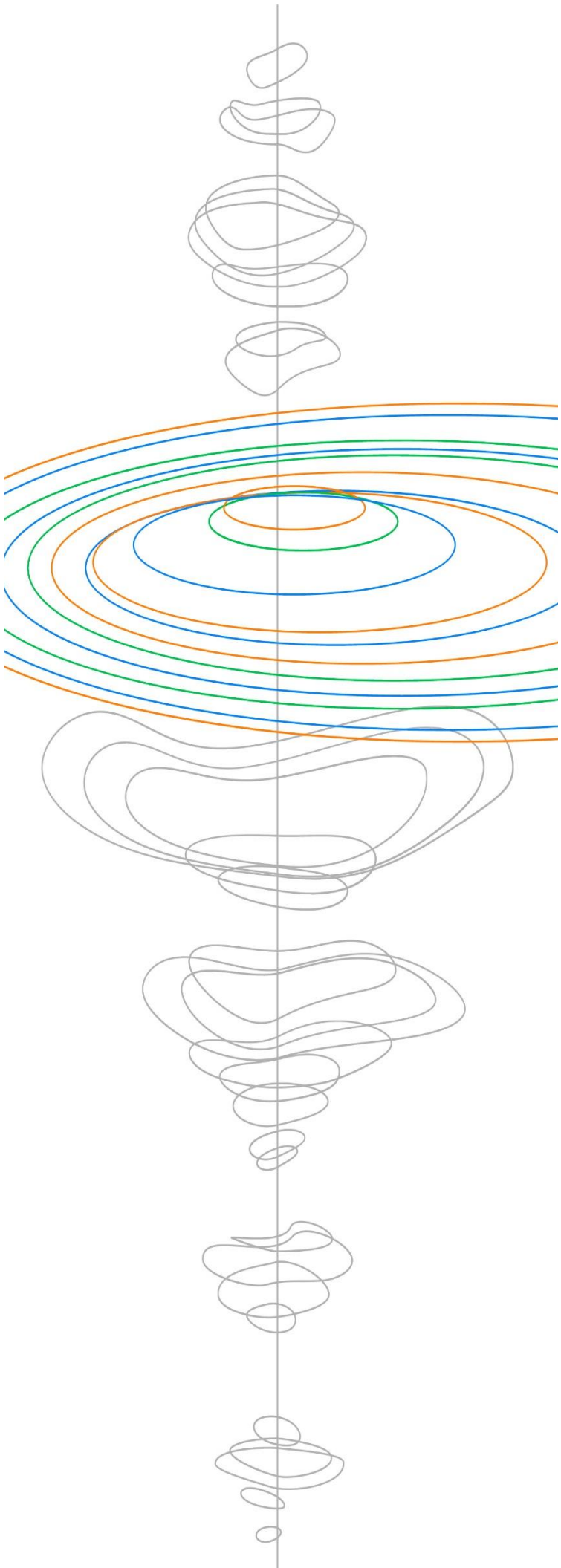
IV. CONCLUSION

TOBAM has observed that countries where democracy, human rights, and civil rights are respected and preserved create favorable conditions for the effective allocation of labor and capital. This environment promotes innovation and economic growth, through investors’ confidence in the stability and fairness of institutions.

The LBRTY® portfolio commits to this philosophy by minimizing exposure to autocratic country risk through excluding authoritarian countries and using the Authoritarian Exposure (AE) to manage indirect exposures.

On the EM universe, the market cap-weighted benchmark does not score well on that metric, yielding a relative under-performance that can’t be explained by the usual risk factors. LBRTY’s excess return over the market cap-weighted benchmark is primarily driven by its management of the indirect exposure of the stocks.

With the creation of LBRTY®, investors now have a tool to address geopolitical risk and instability in their foreign and emerging market equity exposures. This strategy not only enhances long-term expected returns but also reduces market risk caused by geopolitical instability. By carefully selecting stocks using their Authoritarian Exposure, LBRTY® offers a more stable choice for long-term investors seeking enhanced risk-adjusted returns.



ABOUT TOBAM

TOBAM is an asset management company offering innovative investment capabilities designed to increase diversification. Its mission is to provide rational and professional solutions to long term investors in the context of efficient markets.

The Maximum Diversification® approach, TOBAM's flagship investment process founded in 2006, is supported by original, patented research and a mathematical definition of diversification and provides clients with diversified core exposures, across equity and fixed income markets.

In line with its mission statement and commitment to diversification, TOBAM also launched a separate activity on cryptocurrencies in 2017.

As of December 2023, TOBAM manages approx. \$5 billion on behalf of clients globally. TOBAM's team is composed of 40 professionals.

CONTACTS

- Paris
26, Avenue des Champs-Élysées, 75008 Paris- France
- Dublin
2, Business Park, 3 W Pier, Dún Laoghaire, Dublin,
- New York
12 E 49th St Suite 4203, New York, NY 10017, United States

Client Service
clientservice@tobam.fr

DISCLAIMER

This document is confidential and is intended only for the recipient. It is for Professional Investors Only.

This document is not an offer for sale of funds to US persons (as such term is used in Regulation S promulgated under the 1933 Act). This material is provided for information purposes only and does not constitute a recommendation, solicitation, offer, advice or invitation to enter in any transaction and should in no case be interpreted as such. The information provided relates to strategies managed by TOBAM, a French investment adviser registered with the U.S. Securities and Exchange Commission (SEC) under the U.S. Investment Advisers Act of 1940 and the Autorité des Marchés Financiers (AMF) and having its head office located at 26 avenue des Champs Elysées, 75008 Paris, France. TOBAM's Form ADV is available free of charge upon request. In Canada, TOBAM is acting under the assumed name "Tobam SAS Inc." in Alberta and "TOBAM Société par Actions Simplifiée" in Québec.

Investment involves risk, past performance is not indicative of future results, investors could lose of their investment. All investors should seek the advice of their financial advisor prior to any investment decision in order to determine its suitability.

Past performance and simulations based on back tests are not reliable indicators of future performance, forecast or prediction. Back tested data may reflect the application of the strategy methodology to historical data, and thus the strategies were constructed with the benefit of hindsight and has inherent limitations. TOBAM has continued and will continue its research efforts amending the investment process from time to time accordingly. TOBAM reserves the right of revision or change without notice, of the universe, data, models, strategy and opinions.

The constraints and fees applicable to an actual portfolio would affect the results achieved. The value and the income produced by a strategy may be adversely affected by exchange rates, interest rates, or other factors. This material, including back tests, is based on sources that TOBAM considers to be reliable as of the date shown, but TOBAM does not warrant the completeness or accuracy of any data, information, opinions or results.

The carbon impact shown is the weighted average of carbon emissions corresponding to scopes 1 and 2 of the GHG Protocol. Data on emissions used is obtained from a number of sources including company reports, CDP questionnaire (Carbon Disclosure Project) or the estimation model. The data does not take into account all emissions induced by the firm.

TOBAM's quantitative investment process is supported by extensive proprietary computer code. TOBAM's researchers, software developers, and IT teams follow a structured design, development, testing, change control, and review processes during the development of its systems and the implementation within our investment process. These controls and their effectiveness are subject to regular internal reviews. However, despite these extensive controls it is possible that errors may occur in coding and within the investment process, as is the case with any complex software or data-driven model, and no guarantee or warranty can be provided that any quantitative investment model is completely free of errors. Any such errors could have a negative impact on investment results. We have in place control systems and processes which are intended to identify in a timely manner any such errors which would have a material impact on the investment process.

TOBAM accepts no liability whatsoever, whether direct or indirect, that may arise from the use of information contained in this material. This document and the information herein shall not be reproduced, modified, translated or distributed without the express written permission of TOBAM or TOBAM NORTH AMERICA and to the extent that it is passed on, care must be taken to ensure that any reproduction is in a form which accurately reflects the information presented here.

AFTM